

BERKOL cots and aprons
Customer value with polymeric solutions

Bräcker

BERKOL Cots and Aprons

Customer value with polymeric solutions

Elastomer solutions
for all applications

OUTSTANDING

ADVANTAGES

BERKOL

Cots and Aprons

Perfect Running Behaviour

Perfect running behavior is characterized by fewer laps, fewer end breaks and fewer unbound fibers.

Highest Product Reliability

By using high quality, reliable and stable raw materials, a superior reliability is achieved.





Outstanding Lifetime

Resistance to all common fiber finishes, paints and greases, as well as various ambient conditions over the entire service life.

Area of Application

BERKOL cots and aprons are designed to meet the most stringent requirements, regardless of fibers and ambient conditions.

BERKOL Cots

Made of the finest choice of rubber compounds, BERKOL cots offer excellent running performance, long lifetime and consistent yarn quality. Machine downtime is minimized which leads to higher productivity, throughout the service life of the cot.

They are suitable for any kind of short-staple spinning process, such as combing machines, draw frames, roving frames and ring and compact-spinning machines. All common dimensions are available and meet Original Equipment Manufacturers (OEM) requirements.

Best grindability

Stable compound quality is a prerequisite for stable grinding which is the basis for high yarn quality and long lifetime.

Reduced lap formation and yarn breaks

Thanks to the superior quality, the BERKOL cots feature a perfect running behavior resulting in fewer laps and ends down.

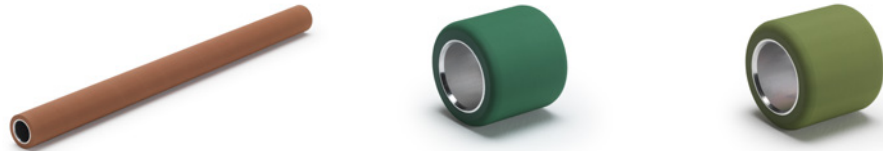


Lower machine downtime

BERKOL cots are reliable and fit for the most stringent conditions.

Spinning Preparation

Drawing



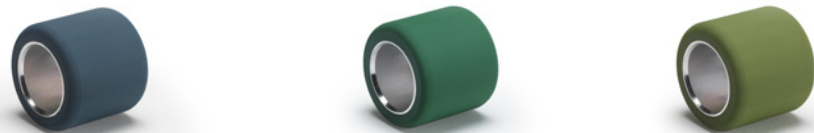
| Type application | Front roller | Front roller | Front roller |
|--------------------------|--------------|-------------------------------------|---|
| Fibers | Cotton | Cotton Blends Man-made fibers | Cotton Wool Blends Technical fibers Man-made fibers |
| Color Shore A hardness | 65S brown | 74 green | 83 olive |

Combing



| Type application | Detaching roller Drafting system | Delivery roller Drafting system |
|--------------------------|-------------------------------------|------------------------------------|
| Fibers | Combed Cotton | Combed Cotton |
| Color Shore A hardness | 65S brown | 83 olive |

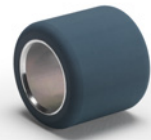
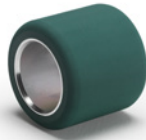
Roving



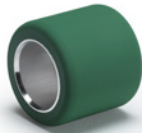
| Type application | Front roller | Front roller | Front and back roller |
|--------------------------|--------------|--------------------------------------|---|
| Fibers | Cotton | Cotton Blends Technical fibers | Cotton Wool Blends Technical fibers Man-made fibers |
| Color Shore A hardness | 70 blue | 74 green | 83 olive |

Spinning

Ring spinning

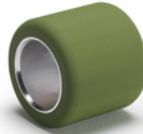
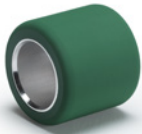


| Type application | Front roller | Front roller | Front roller |
|--------------------------|---|-------------------------------------|-------------------------------------|
| Fibers | Blends Technical fibers Man-made fibers Wool | Cotton Blends Man-made fibers | Cotton Blends Man-made fibers |
| Color Shore A hardness | 63 petrol | 65 red | 70 blue |



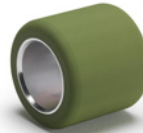
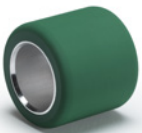
| Type application | Front roller |
|--------------------------|---|
| Fibers | Cotton Blends Man-made fibers Technical fibers |
| Color Shore A hardness | 74 green |

Rotor spinning



| Type application | Nip roller | Nip roller |
|--------------------------|-------------------------------------|-------------------------------------|
| Fibers | Cotton Blends Man-made fibers | Cotton Blends Man-made fibers |
| Color Shore A hardness | 74 green | 83 olive |

Air-jet spinning



| Type application | Nip roller | Nip roller |
|--------------------------|--|--|
| Fibers | Cotton Blends Man-made fibers Core yarn Technical fibers Wool | Cotton Blends Man-made fibers Core yarn Technical fibers Wool |
| Color Shore A hardness | 74 green | 83 olive |

BERKOL Aprons

BERKOL aprons display a perfect running behavior, which comes along with good friction properties over the whole apron lifetime. They are vibration free and feature the highest possible crack resistance and lowest slippage tendency, resulting in less downtime for each single spindle position.

BERKOL aprons process all common fibers under any ambient conditions. They are available in a wide range of dimensions. Some sizes can even come with a knurled inside structure. Skived or skived and pre-glued versions are also available.

Top aprons




| Type application | Top aprons | Top aprons |
|--------------------|------------------------------|-----------------------------------|
| Fibers | Cotton Blends | Cotton |
| Product Color | I-HX/U-HP grey/olive green | I-HX8/U light green/olive green |

Bottom aprons



| Type application | Short bottom aprons Long bottom aprons | Short bottom aprons Long bottom aprons | Bottom aprons |
|--------------------|--|--|-------------------------------|
| Fibers | Cotton | Cotton Blends | Blends Man-made fibers |
| Product Color | I-HX8/C light green/dark green | I-HX8/C-HP grey/dark green | HX-3/S dark blue/dark green |



Bräcker AG
Obermattstrasse 65
CH-8330 Pfäffikon-Zürich
T +41 44 953 14 14
sales@bracker.ch

Bräcker S.A.S.
132, Rue Clemenceau
FR-68920 Wintzenheim
T +33 389 270007
sales@bracker.fr

www.bracker.ch

The data and illustrations in this brochure and on the corresponding data carrier refer to the date of printing. Bräcker reserves the right to make any necessary changes at any time and without special notice. Bräcker systems and Bräcker innovations are protected by patents.

3500-v1 en 2301